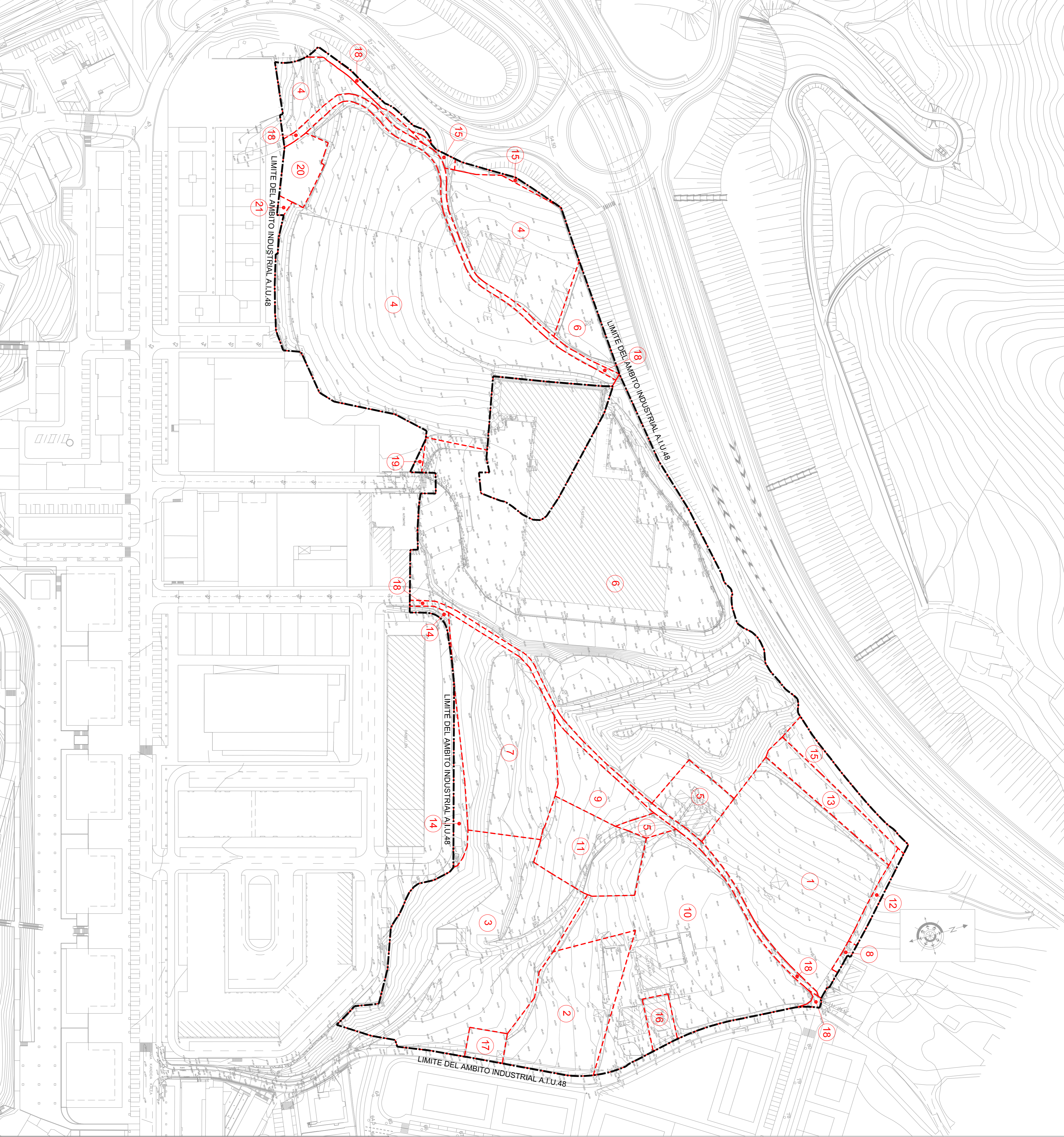


PARCELA	PROPIETARIO	SUP. CORREGIDA
1	MARIA ARANZAZU ANSA GODEMUGA e hijos	6.893
2	IMPROBAL	3.415
3	Hna. ARRUARTE ECHEVERRIA	9.115
4	HERNANOS JAUREGUI TAPIA	22.001
5	MARTIN VITORIA LAZCANO	1.244
6	PLASTISOLAR S.A.	25.112
7	BALTEFORTE S.L.	5.157
8	MARIA JOSE ARTOLA JAUREGUI	76
9	IGNACIO ZABALA RIZAR	1.356
10	HERNANOS GAZTANAGA USARTENDIA	8.216
11	MARIA TERESA OTIANO OTIANO	2.181
12	JESUS MARIA AYERZA JAUREGI	286
13	MARIA TERESA BARRANDIARAN MAEZTU	1.106
14	DEMOC-2	588
15	HERNANOS TITURALDE ARTOLA	984
16	HERNANOS TITURALDE ARTOLA	390
17	IBERDROLA S.A.	343
18	AVIANTZAMENTO ANDOAIN	2.203
19	THYSEN	258
20	JESUS MARIA ALZURI	703
21	M <sup>o</sup> CARMEN PAGOLA MUNOZA	54
<b>TOTAL</b>		<b>91.280</b>



II TESTU BATEGINA

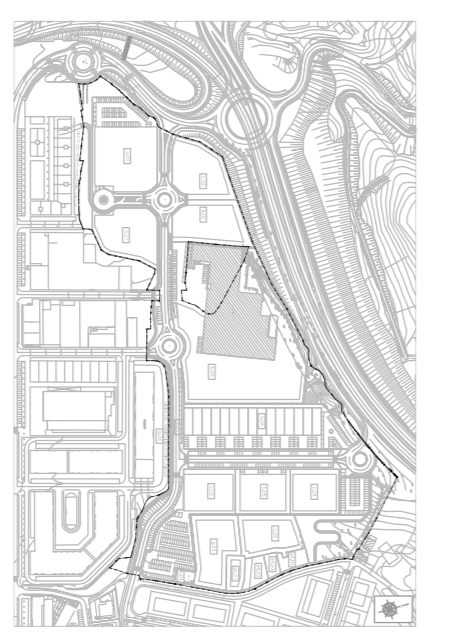
TEXTO REFUNDIDO II

ILLARRAMENDI A.I.U.48  
 PLAN PARTZIALA  
 (ANDOAIN)  
 GIPUZKOA

PLAN PARCIAL  
 A.I.U.48 - ILLARRAMENDI DE  
 (ANDOAIN)  
 GIPUZKOA

2016ko UZTAILA

JULIO 2016



004 PLANO

PLANO 004

PARTEZLA PLANOA

PARCELARIO

1:1000 ESKALA  
 ERREF. - PP-02-2011

ESCALA 1:1000  
 REF. - PP-02-2011

J.M. AGUIRRE  
 ARK. GON.

IGNACIO GARBIZU BARRIOJA  
 JESUS VICTORIANO LARRENTE